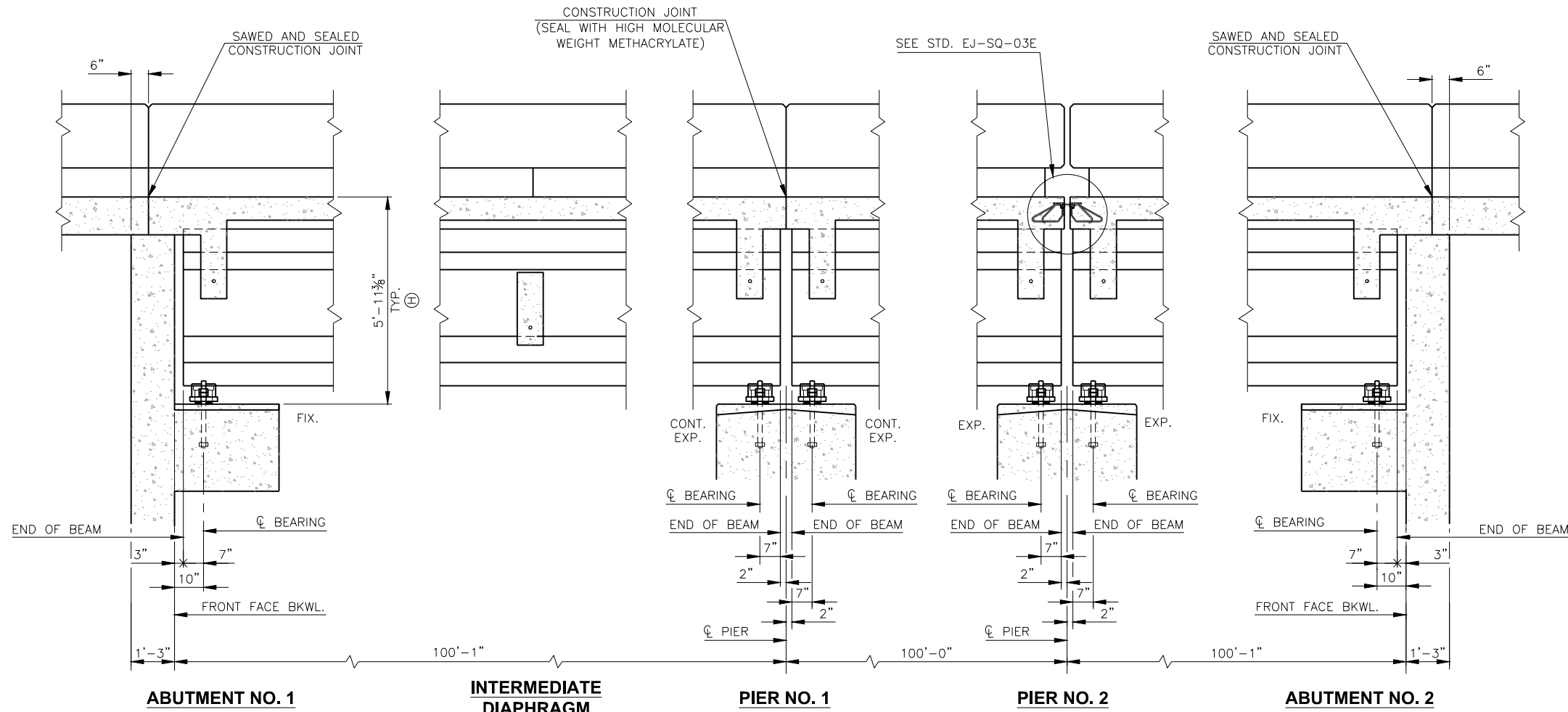


DESCRIPTION	REVISIONS	DATE



EXPANSION JOINT SETTING SCHEDULE	
EXP. JOINT OPENING	TEMPERATURE
	PIER NO. 2
3"	0°F
2 7/8"	2°F
2 3/4"	8°F
2 5/8"	14°F
2 1/2"	20°F
2 3/8"	26°F
2 1/4"	31°F
2 1/8"	37°F
2"	43°F
1 7/8"	49°F
1 3/4"	55°F
1 5/8"	60°F
1 1/2"	66°F
1 3/8"	72°F
1 1/4"	78°F
1 1/8"	84°F
1"	90°F
7/8"	95°F
3/4"	101°F
5/8"	107°F
1/2"	113°F
3/8"	119°F
1/4"	120°F

⊕ DIMENSION IS FROM TOP OF DECK SLAB TO BOTTOM OF BEARING ASSEMBLY AT CL BEARING.

LONGITUDINAL SECTION

DO NOT PLACE THE CONCRETE FOR THE DECK SLAB OR APPLY OTHER MASSIVE LOADS TO THE BEAMS UNTIL THE CONCRETE IN THE DIAPHRAGMS HAS BEEN IN PLACE A MINIMUM OF 10 DAYS OR AT THE DISCRETION OF THE ENGINEER. THE ENGINEER MAY APPROVE SHORTENED TIME IF THE BEAM AND DIAPHRAGM CONCRETE HAS ATTAINED 80% OF THE SPECIFIED COMPRESSIVE STRENGTH.

SUPERSTRUCTURE QUANTITIES		
ITEM	UNIT	TOTAL
PRESTRESSED CONCRETE BEAMS (TYPE IV)	L.F.	1,495
SAW-CUT GROOVING	S.Y.	1,341
SEALED EXPANSION JOINT	L.F.	41.8
CONCRETE RAIL (TR4)	L.F.	603.3
STRUCTURAL STEEL	LB.	1,430
STAINLESS STEEL FIXED BEARING ASSEMBLY	EA.	10
STAINLESS STEEL EXPANSION BEARING ASSEMBLY	EA.	20
CLASS AA CONCRETE	C.Y.	358.4
EPOXY COATED REINFORCING STEEL	LB.	97,830
WATER REPELLENT (VISUALLY INSPECTED)	S.Y.	995
SEALER CRACK PREPARATION	L.F.	41
SEALER RESIN	GAL.	1

THIS DRAWING IS PRELIMINARY IN NATURE. IT IS NOT A FINAL SIGNED AND SEALED DRAWING

DESIGN	J.W.H.	SH34 OVER N. PERSIMMON CREEK WOODWARD COUNTY BRIDGE A
DRAWN	R.A.P.	
CHECKED	J.W.H.	
APPROV.	T.A.C.	
SQUAD	CEC	

LONGITUDINAL SECTION

JOB PIECE NO. 28827(04) SHEET NO. 32